

INFLUENZA A + B RAPID TEST CASSETTE

JusChek⁺



YOUR ULTIMATE WEAPON IN THE FIGHT AGAINST INFECTIOUS DISEASES

Rapid chromatographic immunoassay for the qualitative detection of Influenza A and B antigens in nasopharyngeal swab, throat swab or nasal aspirate specimens as an aid in the rapid differential diagnosis of Influenza A and B viral infections.

Nasopharyngeal Swab Specimen

SENSITIVITY	Type A 99.0 %	Type B 97.7 %
SPECIFICITY	Type A 98.9 %	Type B 99.0 %

Throat Swab Specimen

SENSITIVITY	Type A 95.1 %	Type B 94.2 %
SPECIFICITY	Type A 99.3 %	Type B 99.4 %

Nasal Aspirate Specimen

SENSITIVITY	Type A 100 %	Type B 97.9 %
SPECIFICITY	Type A 99.2 %	Type B 99.4 %

PRODUCT INFORMATION

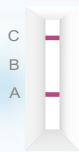
ITEM	QUANTITY	STORAGE & STABILITY
JusChek Influenza A+B Rapid Test Cassette	20 Tests/ kit	2°C – 30°C shelf life: 23 months

**NASOPHARYNGEAL,
THROAT SWAB,
NASAL ASPIRATE**

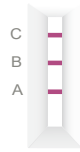
COMPONENTS	
Test Cassettes	20pcs
Sterile swabs	20pcs
Specimen Collection Tubes w. Extraction Buffer	20pcs
Package Insert	1pc

RESULT INTERPRETATION

POSITIVE



Influenza A
Detected Influenza A antigen in the sample.

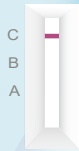


Influenza A and Influenza B
Detected Influenza A antigen and Influenza B antigen in the sample.



Influenza B
Detected Influenza B antigen in the sample.

NEGATIVE



No colored line appears in the test line regions (A or B).

INVALID



Control line fails to appear.

ORDERING INFORMATION

CAT. NO	ITEM	SAMPLE	QUANTITY
IIN-502	JusChek Influenza A+B Rapid Test Cassette	Swab / Nasal Aspirate	20 T/kit

MDA APPROVED



Certificate No.: IVD02971223-149268

DAIICHI BIOTECH SERVICES SDN BHD (925272-K)

Address: B-SG-20, Sunway Geo Avenue, Jalan Lagoon Selatan, Bandar Sunway, 47500 Subang Jaya, Selangor.

Tel: +603-5021 4600 / 4677 **Fax:** +603-5021 4668 **E-mail:** inquiry@daiichibiotech.com.my

