

H. PYLORI ANTIBODY RAPID TEST CASSETTE

Beright[™]



FAST RESULT



EASY
TO USE



10
MINUTES
RESULT



A QUICK AND ACCURATE SOLUTION FOR DIAGNOSING H. PYLORI INFECTION

H. pylori infection affects millions of people worldwide and is a leading cause of gastritis and peptic ulcer disease. This test cassette is designed to aid in the diagnosis of H. pylori infection, giving you peace of mind and helping you take the necessary steps towards treatment and recovery. With its rapid chromatographic immunoassay, this test can detect antibodies to H. pylori in whole blood, serum, or plasma, providing valuable insights into the presence of this common bacterium.

Using advanced technology, this rapid test cassette contains H. pylori antigen-coated particles and anti-human IgG coated on the membrane. By detecting the presence of specific antibodies, the test aids in accurate and early diagnosis, enabling timely treatment and management of H. pylori infection. The chromatographic immunoassay method allows for rapid detection, saving your time and minimizing any potential delays in diagnosis.

SENSITIVITY
96.8 %

SPECIFICITY
93.0 %

PRODUCT INFORMATION

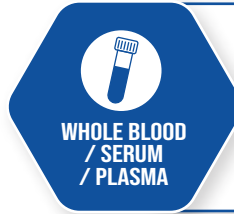
ITEM	QUANTITY	STORAGE & STABILITY
Beright H. pylori Antibody Rapid Test Cassette	10 Tests/ kit	2°C – 30°C shelf life: 23 months

At least half the world's population is infected by the bacterium H. pylori, making it the most widespread infection in the world.

H. pylori is linked to a variety of gastrointestinal diseases, including:

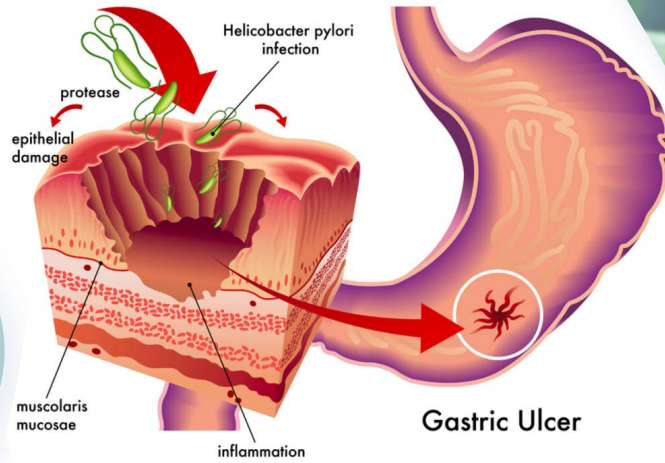
- Acute or chronic gastritis
- Peptic ulcer disease (PUD)
- Non-ulcer dyspepsia
- Stomach ulcer

H. pylori is a very common infection, infecting approximately 2/3rd of the world's population. Infections are usually acquired in early childhood in all countries.



COMPONENTS

Test Cassettes	10pcs
Droppers	10pcs
Buffer	1pc
Package insert	1pc



RESULT INTERPRETATION

POSITIVE



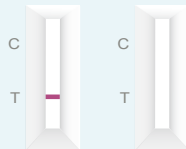
Two distinct colored lines appear in the control line region (C) and in the test region (T).

NEGATIVE



No colored line appears in the test line regions (T).

INVALID



Control line fails to appear.

MDA APPROVED



ORDERING INFORMATION

CAT. NO	ITEM	QUANTITY
IHP-402	Beright H. pylori Antibody Rapid Test Cassette	10 Tests / kit

DAIICHI BIOTECH SERVICES SDN BHD (925272-K)

Address: B-SG-20, Sunway Geo Avenue, Jalan Lagoon Selatan, Bandar Sunway, 47500 Subang Jaya, Selangor.
Tel: +603-5021 4600 / 4677 **Fax:** +603-5021 4668 **E-mail:** inquiry@daiichibiotech.com.my

